

VISIONARY-MS Blinded Interim Data Update

Treatment of Visual Pathway Deficits In Chronic Optic Neuropathy for Assessment of Remyelination in Stable RMS

H. Beadnall¹, A. Klistorner³, M. Barnett³, R. Sergott⁴, A. Rynders², K.S. Ho², M. Mortenson⁵, R. Glanzman², M. Hotchkin²

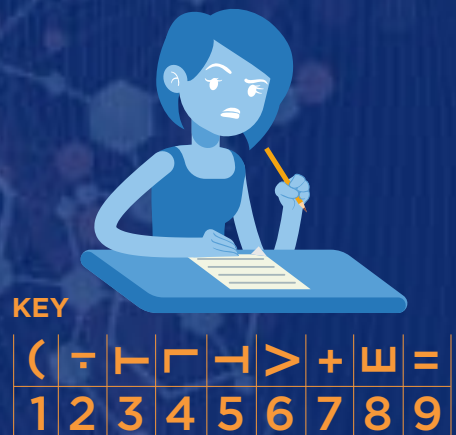
¹Sydney Brain Mind Centre and Royal Prince Alfred Hospital, University of Sydney, Australia. ²Clene Nanomedicine, Salt Lake City, UT. ³Sydney Neuroimaging Analysis Centre, Sydney, Australia. ⁴Annesley EyeBrain Center at Thomas Jefferson University Partnered with Wills Eye Hospital, Philadelphia, PA. ⁵Clene Nanomedicine, North East, MD.

Best Corrected Low Contrast Letter Acuity (OD/OS)

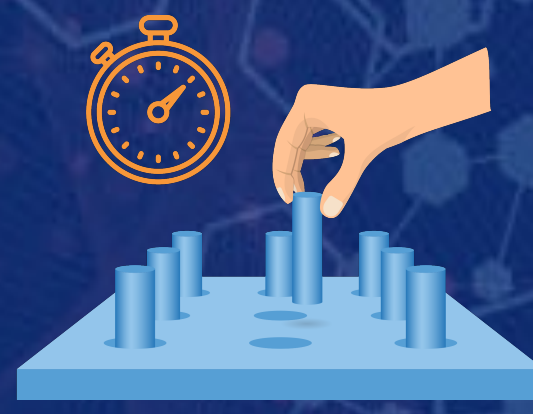


Sloan 2.5% Contrast (2 meter)

Symbol Digit Modalities Test (Cognition)



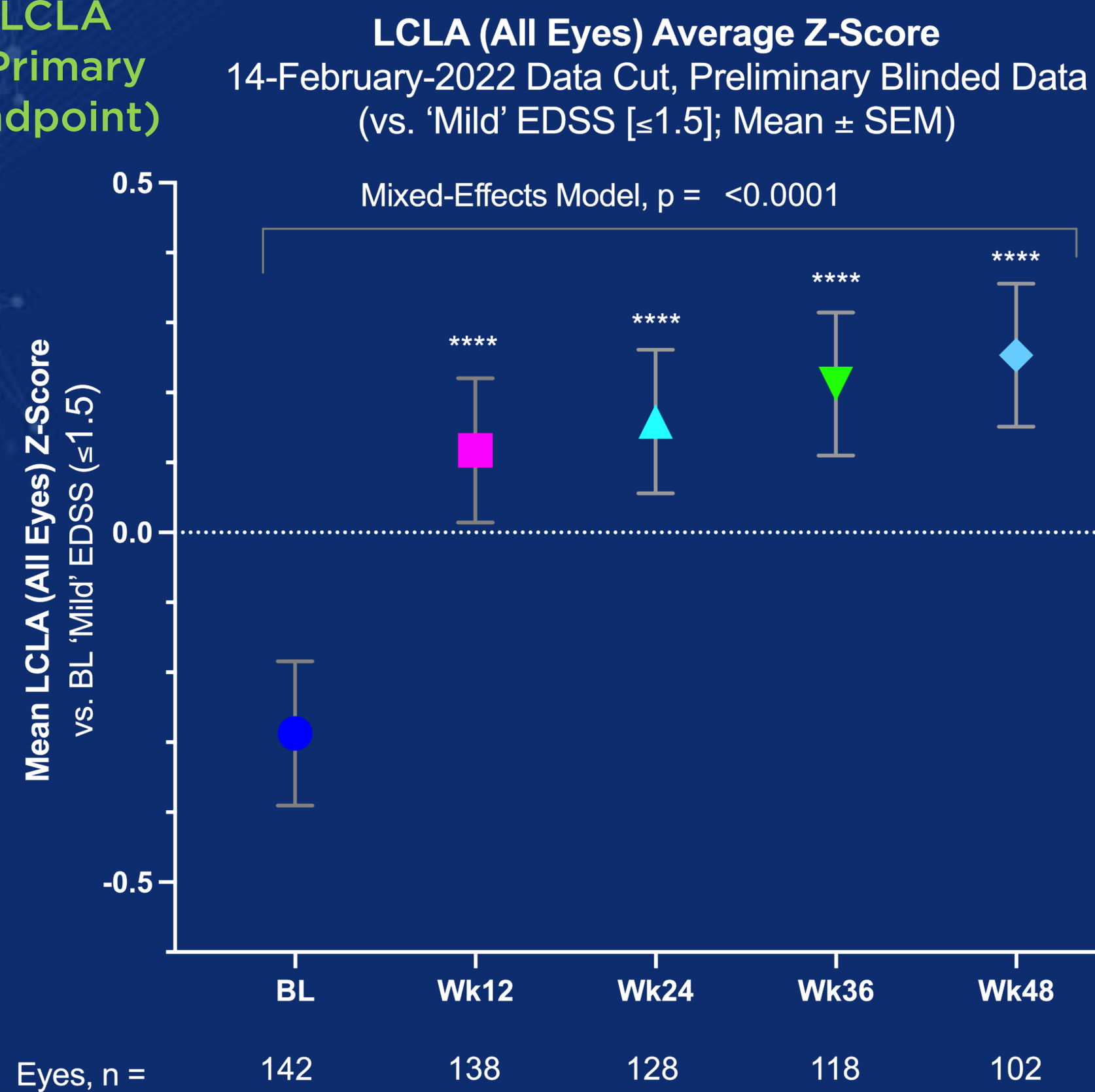
9-Hole Peg Test (D/ND)



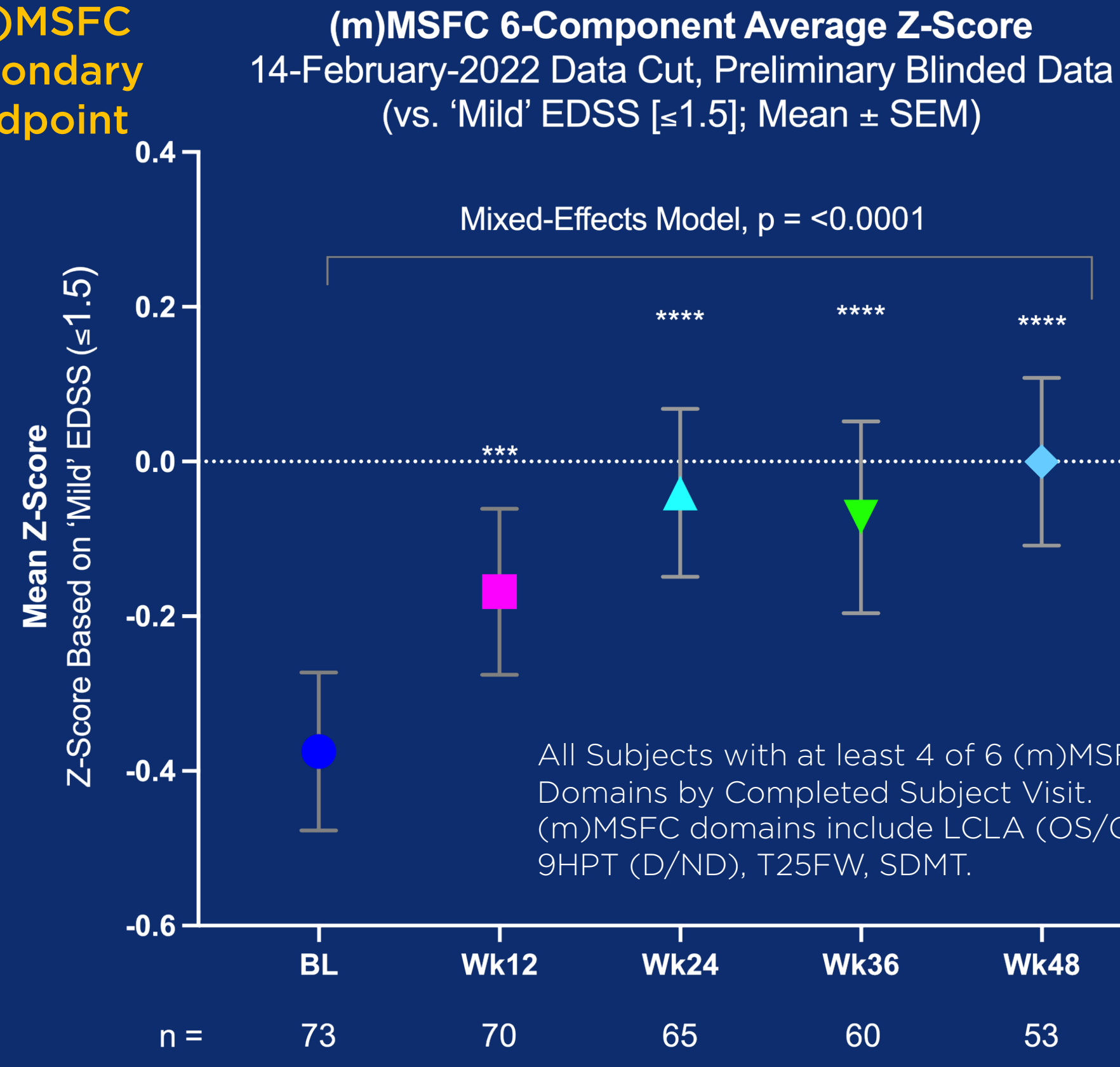
Timed 25-Foot Walk



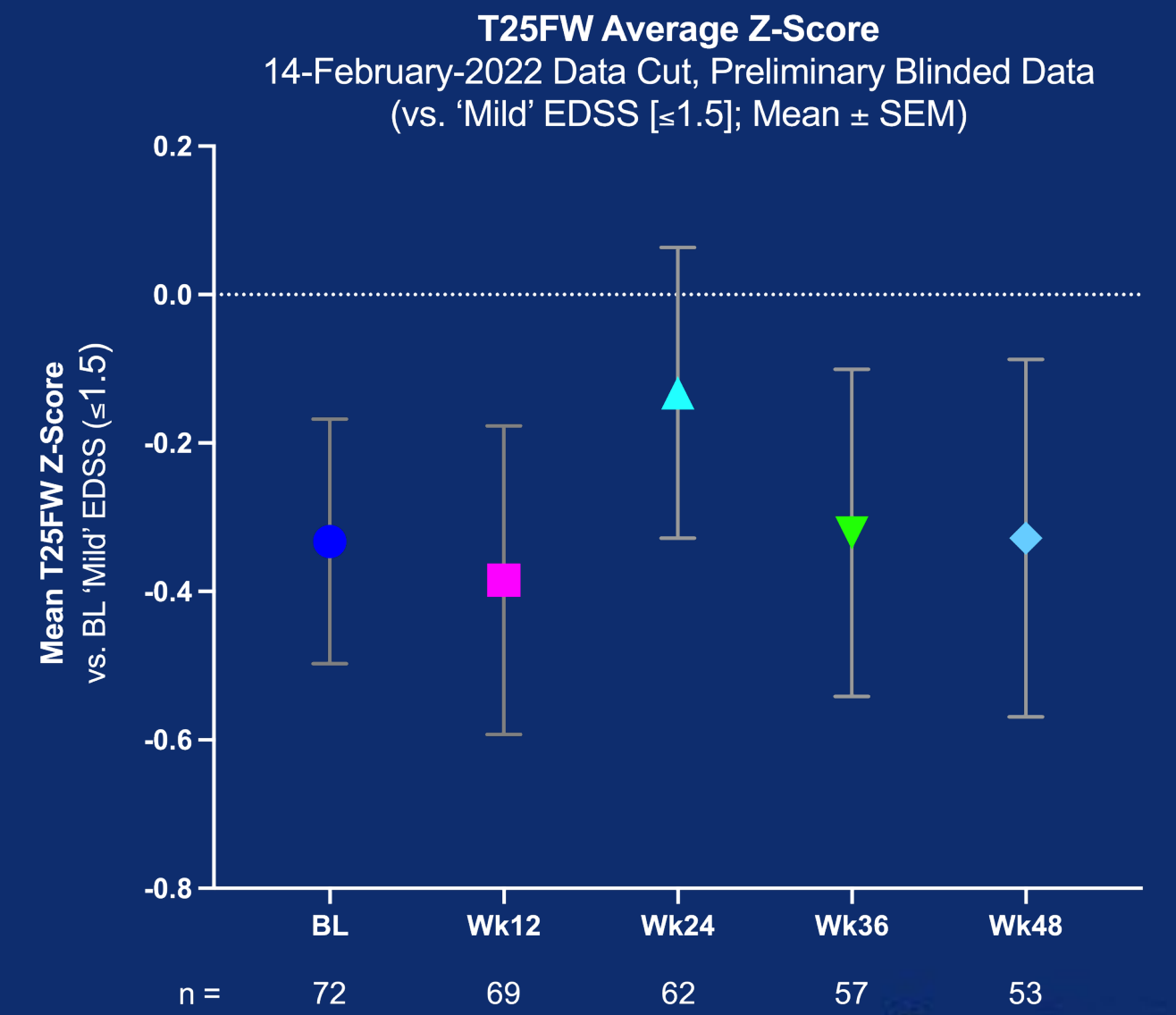
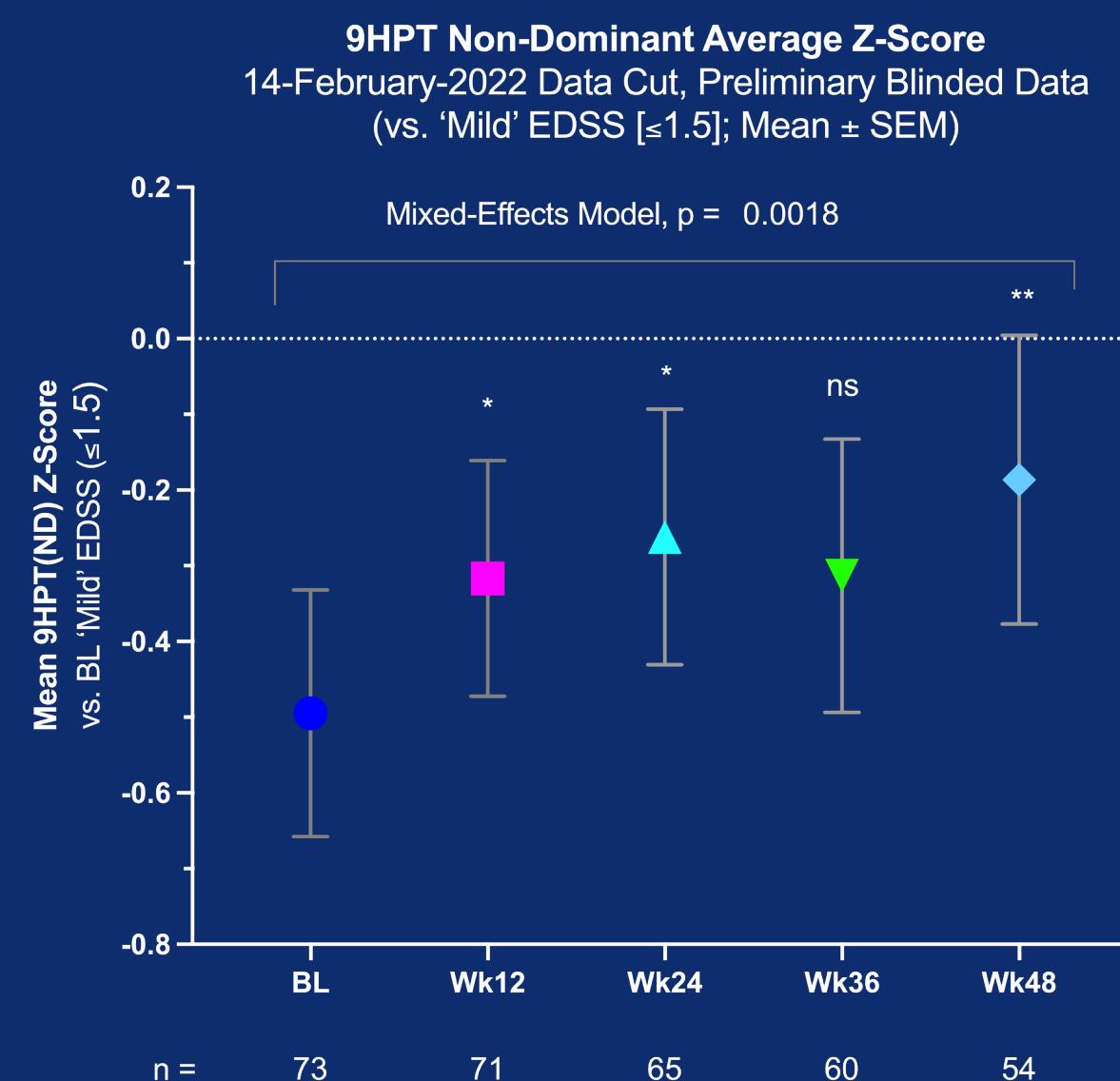
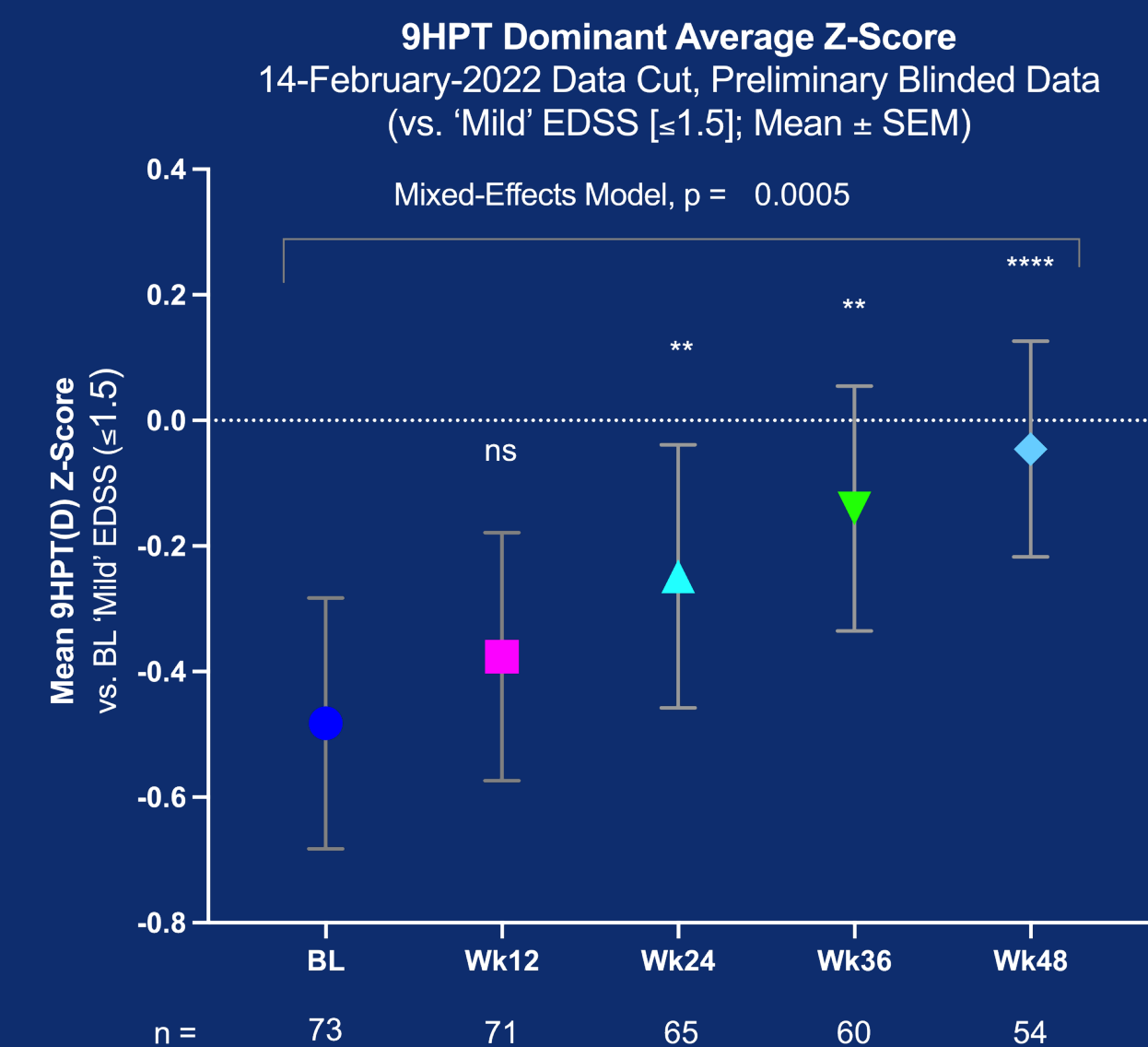
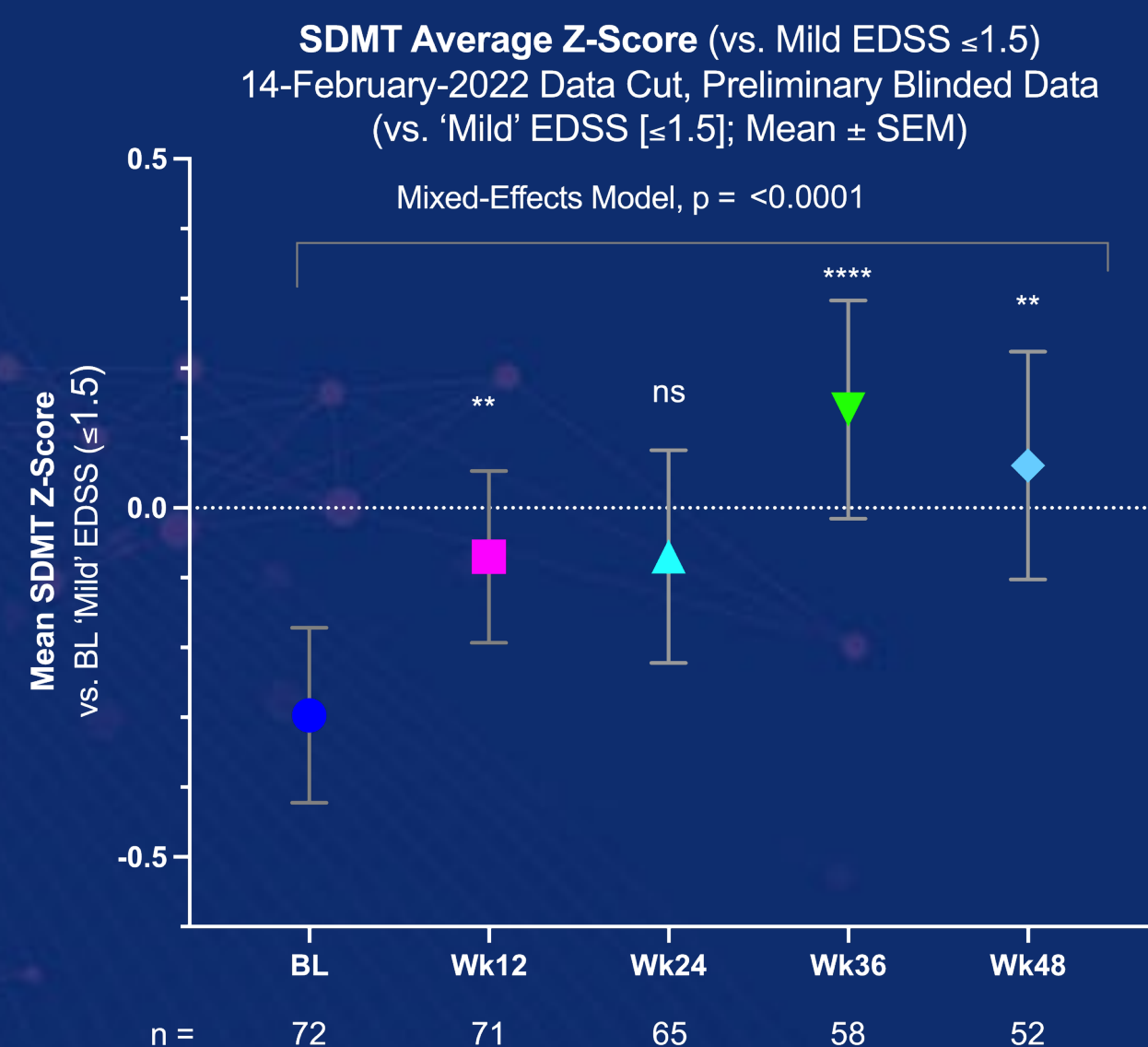
LCLA (Primary Endpoint)



(m)MSFC Secondary Endpoint



- Design:** Randomized Double-Blind Placebo Controlled Trial (1:1:1, 30mg, 15mg, Placebo)
- Safety:** No treatment related SAEs, TEAEs predominantly mild-to-moderate and transient
- Conclusion:** Blinded data show clinically relevant improvements across LCLA & modified-MSFC domains



Notes: Mixed Effects Model, Dunnett's test for multiplicity; * $p < 0.05$, ** $p < 0.01$, *** $p < 0.001$, **** $p < 0.0001$. Z-Score based on Baseline value for EDSS with 'Mild' Severity (e.g., BL Low EDSS [≤ 1.5]) for each domain. (m)MSFC is the modified MS Functional composite (Low contrast letter acuity (LCLA), 9-hole peg test (9HPT), Timed 25-foot walk (T25FW), and Symbol digit modalities test (SDMT)). All available data in EDC.